



Regional collaboration for regional futures

About the Faculty of Collaborative Regional Innovation

Established in 2016, CRI supports regional communities with diverse stakeholders in co-creating sustainable regional futures through excellent research and teaching. Across four departments, over 50 faculty members welcome almost 200 students per year on their journey: to master the skill of servant leadership through developing their own unique combination of knowledge, abilities and experiences to face diverse regional challenges. A council of regional stakeholders including administration, NPOs, businesses and residents oversees and supports CRI's management.

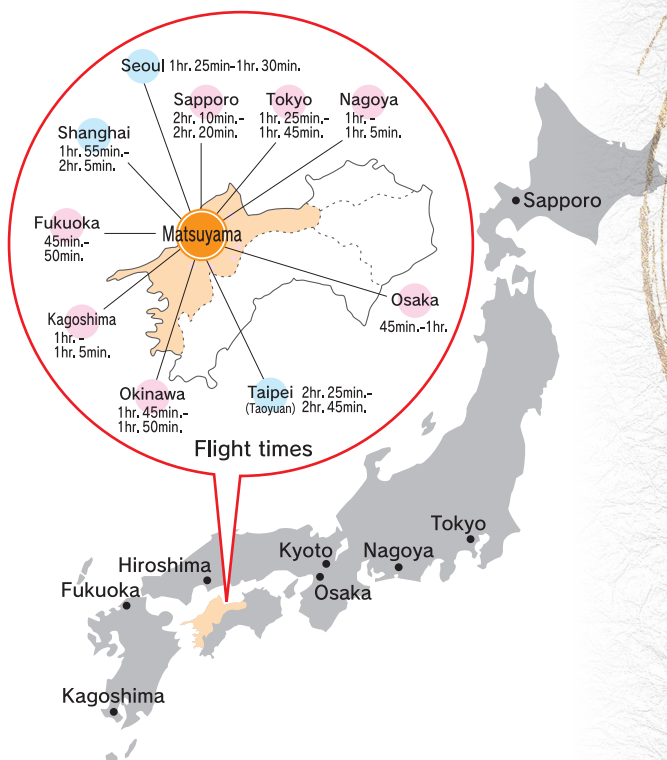
Transdisciplinarity for Regional Challenges

Urgent and diverse regional challenges (from climate change to depopulation) require a new approach to higher education. Transdisciplinary education empowers students at CRI to discover pathways to solving the issues regional communities face. From truly understanding challenges to developing solutions adequate for the local context, students, faculty and stakeholders collaborate in a new form of cooperation between science and society that transcends the traditional model of providing information to policy makers. Four years of study, including a strong emphasis on fieldwork and internships, allow students to acquire problem solving skills, perceive multiple perspectives, apply specialized knowledge, cooperate with and build relationships of trust between diverse stakeholders and allies through servant leadership.

About Ehime University

Home to around 10,000 students and 2,300 faculty and staff members, Ehime University (founded 1949) is a Japanese national university in Matsuyama, Ehime Prefecture, and the largest university in the Shikoku region. Ehime University seeks to lead the region and contribute to society from a global perspective.

Location



Scenic spots in Ehime Prefecture



Dogo Hot Spring Spa



Shimanami Kaido



Mt. Ishizuchi



Faculty of Collaborative Regional Innovation,
3 Bunkyo-cho, Matsuyama, Ehime Prefecture 790-8577, Japan
Phone: 089-927-8927 Fax: 089-927-9287
<https://www.cri.ehime-u.ac.jp>



Faculty of Collaborative Regional Innovation



1 Integrating humanities and sciences

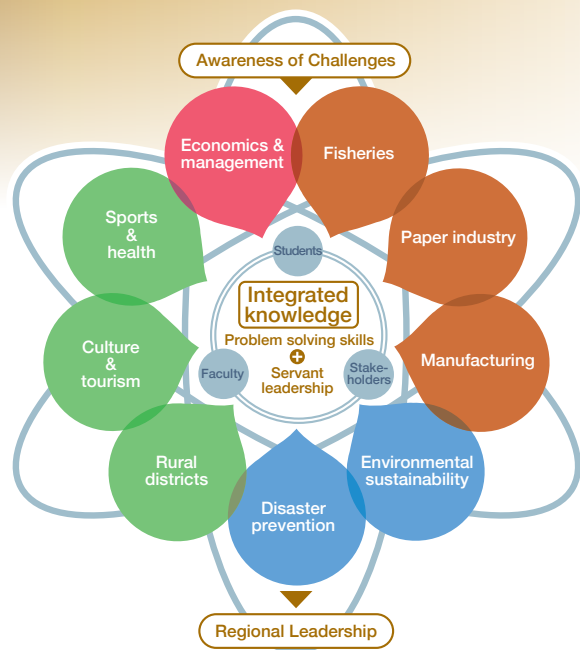
Solving complex regional challenges requires a holistic understanding of the interactions between nature, society and economy. For CRI's broad array of courses, our interdisciplinary faculty draw upon and combine the most relevant knowledge and theory across academic disciplines (including humanities, environmental science, agriculture, medicine, engineering, economics, physical education and many others).

2 Practice based education

From fieldwork to internships and project-based team learning, our courses expand the learning environment beyond the campus. As part of CRI's transdisciplinary approach, students collaborate across departments and study years and work with diverse stakeholders from local and regional communities on solving real-world issues.

3 Co-creating regional futures

CRI supports regional communities to envision and create sustainable futures with their diverse stakeholders. As "resident researchers," CRI faculty and students are deeply rooted in their communities and in the best position to understand and meet these diverse needs.



Departments & Courses



Reforming the region through the power of economy and management

Department of
Industrial Management

Industrial Management Course
Business Creation Course



Opening up future industries through regional collaboration

Department of
Industrial Innovation

Marine Products Science Course / Paper Industry Course
Manufacturing Course



Co-creating sustainable communities for people and nature

Department of
Environmental Design

Environmental Sustainability Course
Regional Design & Disaster Prevention Course



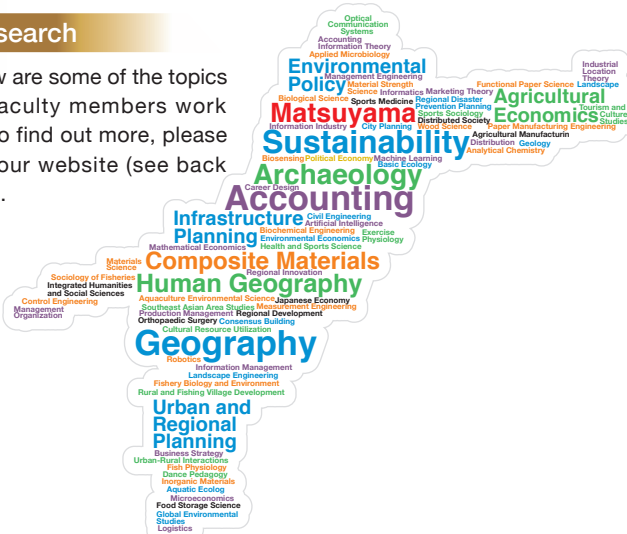
Cultivating regional futures from diverse resources

Department of
Regional Resource Management

Agricultural, Mountain and Fishing Villages Management Course
Cultural Resource Management Course
Sports and Health Management Course

Research

Below are some of the topics our faculty members work on. To find out more, please visit our website (see back page).



Associated Ehime University Offices & Centers

SUSTAINABLE DEVELOPMENT GOALS

SDGs Promotion Office



Paper Industry
Innovation Center



Regional Cooperation
Center in Saijo



South Ehime Fisheries
Research Center



Research Center for
Regional Collaboration



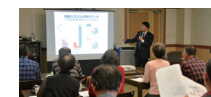
Regional Cooperation
Center in Nanyo



Center for Disaster
Management Informatics
Research



Research Center for Asian
Archaeology of Industry
and Culture



Regional Cooperation
Center in Chuyo



Regional collaboration for regional futures

About the Faculty of Collaborative Regional Innovation

Established in 2016, CRI supports regional communities with diverse stakeholders in co-creating sustainable regional futures through excellent research and teaching. Across four departments, over 50 faculty members welcome almost 200 students per year on their journey: to master the skill of servant leadership through developing their own unique combination of knowledge, abilities and experiences to face diverse regional challenges. A council of regional stakeholders including administration, NPOs, businesses and residents oversees and supports CRI's management.

Transdisciplinarity for Regional Challenges

Urgent and diverse regional challenges (from climate change to depopulation) require a new approach to higher education. Transdisciplinary education empowers students at CRI to discover pathways to solving the issues regional communities face. From truly understanding challenges to developing solutions adequate for the local context, students, faculty and stakeholders collaborate in a new form of cooperation between science and society that transcends the traditional model of providing information to policy makers. Four years of study, including a strong emphasis on fieldwork and internships, allow students to acquire problem solving skills, perceive multiple perspectives, apply specialized knowledge, cooperate with and build relationships of trust between diverse stakeholders and allies through servant leadership.

Scenic spots in Ehime Prefecture



Dogo Hot Spring Spa



Matsuyama Castle



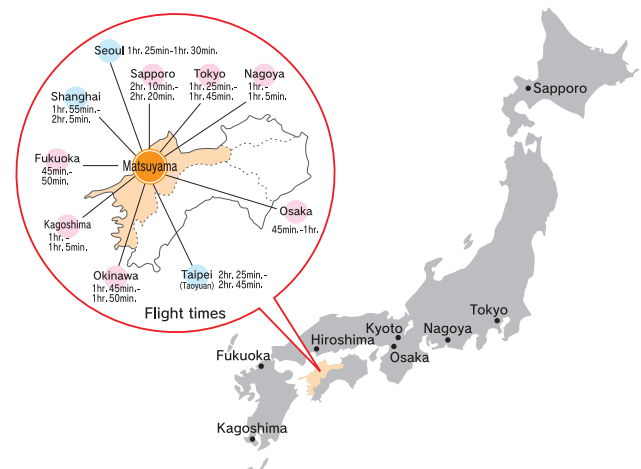
Mt. Ishizuchi



Shimanami Kaido

About Ehime University

Home to around 10,000 students and 2,300 faculty and staff members, Ehime University (founded 1949) is a Japanese national university in Matsuyama, Ehime Prefecture, and the largest university in the Shikoku region. Ehime University seeks to lead the region and contribute to society from a global perspective.



Faculty of Collaborative Regional Innovation,
3 Bunkyo-cho, Matsuyama, Ehime Prefecture 790-8577, Japan
Phone: 089-927-8927 Fax: 089-927-9287
<https://www.cri.ehime-u.ac.jp>



Faculty of Collaborative Regional Innovation



1 Integrating humanities and sciences

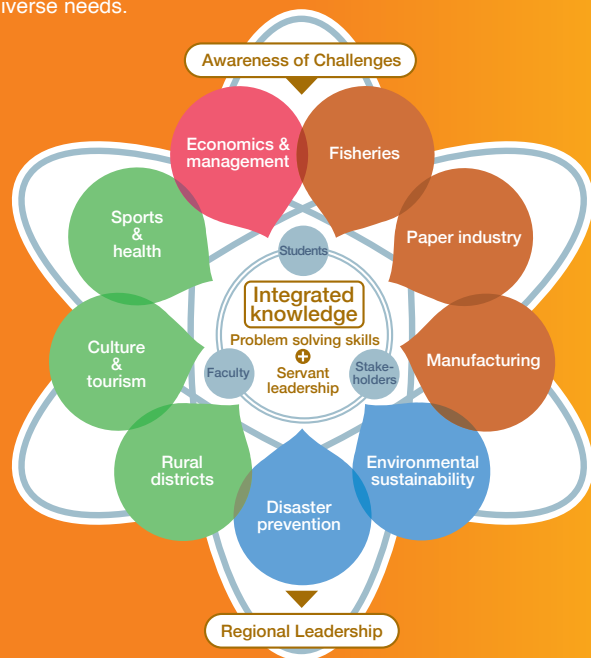
Solving complex regional challenges requires a holistic understanding of the interactions between nature, society and economy. For CRI's broad array of courses, our interdisciplinary faculty draw upon and combine the most relevant knowledge and theory across academic disciplines (including humanities, environmental science, agriculture, medicine, engineering, economics, physical education and many others).

2 Practice based education

From fieldwork to internships and project-based team learning, our courses expand the learning environment beyond the campus. As part of CRI's transdisciplinary approach, students collaborate across departments and study years and work with diverse stakeholders from local and regional communities on solving real-world issues.

3 Co-creating regional futures

CRI supports regional communities to envision and create sustainable futures with their diverse stakeholders. As "resident researchers," CRI faculty and students are deeply rooted in their communities and in the best position to understand and meet these diverse needs.



Departments & Courses



Reforming the region through the power of economy and management

Department of Industrial Management

Industrial Management Course
Business Creation Course



Opening up future industries through regional collaboration

Department of Industrial Innovation

Marine Products Science Course / Paper Industry Course
Manufacturing Course



Co-creating sustainable communities for people and nature

Department of Environmental Design

Environmental Sustainability Course
Regional Design & Disaster Prevention Course



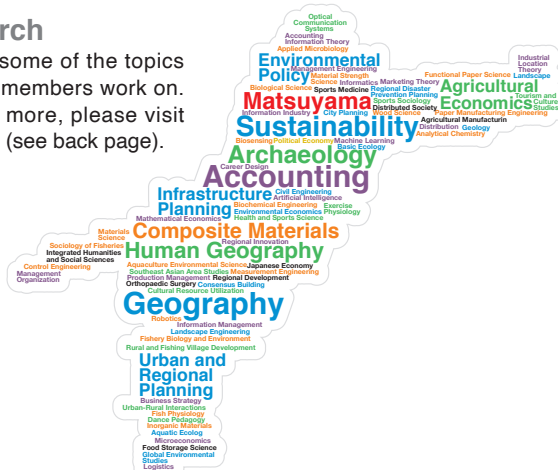
Cultivating regional futures from diverse resources

Department of Regional Resource Management

Agricultural, Mountain and Fishing Villages Management Course
Cultural Resource Management Course
Sports and Health Management Course

Research

Below are some of the topics our faculty members work on. To find out more, please visit our website (see back page).



Associated Ehime University Offices & Centers

